

# ALASKA TROLLER

Newsletter of the Alaska Trollers Association

Winter 2015

## 100 Signatories Call for an End to Underwater Mine Tailings Storage

Thirty-six groups and 54 individuals, business owners and professional scientists recently wrote to Canadian mining and environmental officials in opposition to underwater mine tailings storage. Many organizations have been working to secure improved cross-border watershed protections, due to a rapidly expanding mine program in northern British Columbia. Tensions came to a head last August, after a catastrophic mine tailings dam breach at Imperial Metal's Mt. Polley Mine near Likely, B.C. Failure of the dam released tens of millions of tons of tailings into Hazelton Creek and the Quesnel Lake watershed, ravaging the Fraser River tributary and leaving residents without drinking water. An independent review panel attributed the dam breach to an undetected weakness in the foundation, but also noted that it nearly overtopped its banks in 2014. They issued a set of recommendations, noting the danger of holding dams, particularly those that contain acid generating tailings; fortunately Mt. Polley's did not. The group recommends other methods, like dry stacking. Reviewers estimated that without a change of policy, the failure rate could reach 6 dams every 30 years. In April, the public was asked to comment on an application to re-open Mt. Polley at about half of its pre-breach production level. Owners cite economic benefits for the area and practical considerations for clean up operations as rationale for the request. Meetings with locals and First Nations were held. The Lake Williams Indian Band are leery about re-opening the mine so soon, given many outstanding questions and the clean up to be done. Ironically, tribal representatives expressed strong misgivings about the safety of placing mine effluent into Hazelton Creek when discussing a discharge permit in 2011. Mt. Polley is the biggest environmental disaster to date in British Columbia history, yet government officials barely hit the pause button before moving to approve additional permits around the region.

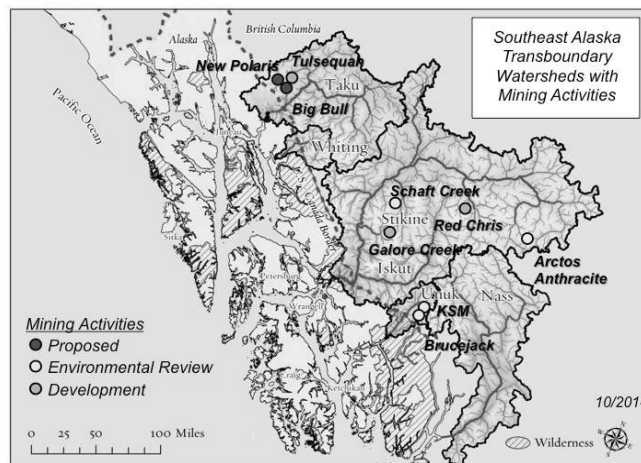
Prior to Mt. Polley, Kerr Sulphurets Mitchell (KSM), a large acid generating mine, was a focus of concern. This mine is anticipated to be more than 6 times larger than Mt. Polley and could impact the Unuk and Nass Rivers. ATA and other groups traveled to Washington, D.C. to alert the Alaska Congressional Delegation and ask their assistance to engage the State Department. Rep. Don Young was first out of the shoot with a letter to Secretary John Kerry, urging him to "...ensure that American concerns are protected and articulated." Senators Murkowski and Begich (and now Sullivan) were right behind him; all called for a Panel Review, the highest available under Canada's permit system. Many Southeast groups and communities have been collaborating to support this review, and also action by the International Joint Commission under the Boundary Waters

Treaty. Canadian officials have so far ignored these requests and recently granted KSM its initial permits.

British Columbia is fast-tracking a number of other large acid mines this year. Red Chris mine in the Stikine River watershed will utilize tailings dams like Mt. Polley. Permitted in 2012, the mine's first load of copper concentrate shipped in mid-April 2015.

### In this issue :

- **Board of Fisheries**
- **Raffle Winners**
- **Mitigation Finale**
- **Friend of the Fleet**



ATA's mission is to preserve, promote, and perpetuate the fishing industry in Alaska. We work for conservation, sound management, good public policy, and safety at sea for the general welfare and mutual benefit of all trollers.





## From the Director's Desk . . .

Wicked problems...Board of Fisheries time is always a stark reminder that we have a few. I don't mean wicked in an awful, nefarious, or even that New England-style good way. I'm talking about those tricky problems where there is no clear cut answer as to what is 'right' or 'wrong', because there are too many variables and points of view. Our fleet is diverse. Big boat, small boat - ice boat, freezer - IFQ holder, ling-codder, chum troller, and more. Management options that work well for one business model are a poor fit for another. It's fascinating, and often maddening, when attempting to sort out industry positions for the good of the order. There are few 'one size fits all' options, and seemingly less all the time. So, how do we muddle through planning for such a fleet, when it's so hard to define a common problem, much less a solution? Trollers have done that a couple of ways. First and foremost, by maintaining an association with a Board of Directors who live in towns across the region and represent the range of troll operations. The goal is to get lots of input for decision-making. Next, ATA has always recommended a mix of trollers to represent the fleet in any management forums, like the Chinook Task Force, which in 1993 developed the framework that defines our Chinook fishery. The plan was intended to address issues brought about by restrictive treaty quotas and increased competition for king salmon, which was having a negative impact on the fishery - most particularly the summer portion. The Task Force worked hard to balance the needs of all types of trollers and address multiple Board of Fisheries demands; everyone had to give up something. The plan has been surprisingly durable. Still, there have always been some areas of disagreement. For instance, the 70:30 split and the winter boundary lines. While these issues have been debated many times over the years, and there are strong feelings on all sides, it becomes quickly apparent to those listening to voices across the region that change in these areas is still not welcome by all, or even a majority. So the ATA board is left with a wicked problem - to change, or not? Change is certainly not a bad thing, but it's not always a necessary thing, either. At this point, the ATA board didn't see enough value in the proposals, or support in the fleet, to justify some of the requested changes. It was as simple, and wickedly complicated, as that. If you see things differently, or have other ideas to suggest, then let's get a conversation going now, before the next Board of Fish cycle.

One change we hope the fleet will like is a mechanism ATA developed with ADFG to help catch the full quota. If there are too few fish left on Sept.1 to conduct a normal opening, ADFG can now allow a trip limit fishery, as opposed to leaving fish on the table. Remaining kings will be shared equally and the fishery opened for up to 10 days.

See you on the dock!

## 2015 Chinook Quota

As of this writing the Chinook quota is still in limbo. As many of you heard at spring port meetings, Alaska members of the Pacific Salmon Treaty Chinook Technical Committee do not agree with the initial pre-season abundance estimates and quotas, which are quite low. Time has been provided for additional review of the Chinook model that produces those estimates. We will report to the fleet on the outcome of that analysis. Alaska is fortunate to have a very solid technical team and we appreciate their efforts to secure a reasonable quota that both protects the resource and allows for fair sharing of harvestable fish.

Both this year and last ATA has worked closely with the state and treaty team in an attempt to gain additional access to the massive returns of Columbia River fall Chinook. Due to confidentiality issues surrounding an international treaty, it is sometimes difficult to be as open with our members as we'd like about this work, particularly in newsletters or online. We know that's as frustrating for you as it is for us. However, we should be able to share a few more details soon.

## New USCG Rules

**Mandatory Dockside Inspection:** Unless you qualify for an exemption you must have a safety exam by Oct. 15th. Commercial fishing vessels with less than 16 persons onboard that operate only within the interior waters of SE Alaska are now exempt from mandatory dockside exams. However, if you have to carry an onboard observer, you do not qualify for the exemption.

**Survival Craft:** If you fish beyond 3 nm of the Territorial Sea baseline you will need a survival craft that keeps you totally out of the water by Feb. 2016.

**Alternative Safety Compliance:** Vessels over 50' that will be 25 years or more in 2020 will be subject to this program, which is still in development. USCG Contact: Troy Rentz (206) 220-7216.

**Safety Regulation Updates:** [FISHSAFE](#)

## The Wheelhouse View

President Steve Merritt, F/V C'est La Vie

Board of Fish time almost always forces ATA to make tough decisions. We have 1,000 trollers in our fleet and they all have a different opinion of how things should go. My first introduction to the process was in the early 90's. The foundation of the way our fishery is executed today was worked out at that meeting. I say worked out facetiously, because it implies everyone was calm and cooperative. It was quite the opposite I assure you. It was a knock down drag out battle and I hope to never see anything like it again. We fought over the winter fishery quota, the winter line, the spring fisheries, the summer fishery start dates, and the 70/30. You name it, was debated.

At that young age I didn't agree with some of the solutions the Chinook Task Force recommended and I testified against some of the ideas. The next troller to testify after me was on the task force and many of you may know him as Fuzzy. He retired a couple of years ago. In his testimony he said, NOBODY is going to be 100% behind the solutions the task force came up with, and everyone involved in those decisions had to compromise in some way. The conclusions the task force arrived at did not come easy.

The Board of Fish passed the task forces plan and that structure still governs our fishery today. Many years have passed since that day. Now that I have been trolling for 30 years, I truly appreciate the dedication to the well-being of our fishery those fisherman showed at that meeting and the sacrifices it took to do it.

With the exception of the development of the chum trolling, our fishery is much the same now as it was then. There has been some changes to the winter fishery but most of what the task force worked out still stands today. Some say the plan is outdated. To me, the fact that our fishery has remained stable and viable is proof that it is not out dated. It is exactly as it should be.

There were two proposals at this year's Board of Fish meeting that would change the foundation of the task force plan. Proposal 220 would have expanded the Yakutat winter fishing line and Proposal 223 would have changed the summer king harvest from 70/30 to 60/40. ATA opposed both proposals and the reasons given by each board member for opposition were no different than what the original task force used in debating the same issues long ago.

I myself opposed the 60/40 because even though the kings are bigger and get a higher price in August, adding one or two king days in August would mean sacrificing two days of the best coho fishing. Financially, it did not add up for me. Whatever gains of price and size were lost by giving up peak coho days.

When the ATA board doesn't support proposals to change the fishery on controversial issues, it sparks resentment toward the association. In the middle of such conflict it is easy to be so focused on a single issue that you lose sight of the good ATA does on the big picture. This meeting ATA fought off another mandatory 10 day coho closure in addition to protecting the District 14 spring fishery from unnecessary closure. We worked with the chum trollers to get reconsideration of a proposal that would have hurt that fishery and supported a proposal that gave them a corridor between areas open to chum trolling.

On many other issues, like treaty, mitigation, ADF&G budget, mining, vessel discharges, and fish initiatives ATA is constantly speaking on your behalf.

We have several new young board members and a handful of long time representatives. We rely heavily on these long term members and our executive director in making decisions because they experienced the history of this fisheries development. I ask you to remember that ATA is just a group of fisherman, like you, dedicated to making the best decisions they can for the troll fishery.

### Concerned about Treaty?

Then consider contributing to ATA's treaty and legal funds. Your membership and contributions are what keeps us in the fight.

## Treaty Mitigation Wraps Up

The Southeast Alaska Chinook Salmon Fishery Mitigation Program was established in 2009, to help mitigate economic impacts of the 15% reduction in Chinook under the 2009 revision of the Pacific Salmon Treaty. The program was aimed at trollers and anglers, since the cut most directly harmed hook and line fishermen. The mitigation program was designed by a Stakeholder's Panel, approved by the governor, and implemented by ADFG, with help from DCCED, and CFEC. ATA is grateful for the efforts of these agencies, whose staff went far above and beyond the call of duty to help create a program to assist trollers and also provide lasting benefits to the region. Thanks also to Steve, Howard, and Richie who donated copious time and perspective to help secure meaningful projects for the fleet. The list here does not include sport specific projects, but those can be viewed online.



Oncorhynchus tshawytscha

### Troll Mitigation Team

**Steve Merritt, F/V C'est La Vie**

31 yr. fisherman, SPC Member, ATA President

**Howard Pendell, F/V Chaos**

40 yr. fisherman, SPC Member, Treaty Rep

**Rich Davis, F/V Westbank, Troll Processors**

44 yr. fisherman, SPC Board, Former Treaty Rep

**Dale Kelley, ATA / Deckhand**

26 yr. ATA Executive Director, Treaty Rep

Categories and Funding	TOTAL (In \$1000's)
Enhancement	\$3,350
Infrastructure (Commercial)	\$2,510
Infrastructure: (Sport Fish)	\$2,483
Direct Payments to Trollers	\$6,457
Research	\$300
<b>TOTAL</b>	<b>\$15,100</b>

For more information:

[Southeast Chinook Mitigation Program](#)

## Enhancement

POW Hatchery Assn	Port St. Nicholas Chinook Net Pens
	Port St. Nicholas Hatchery Operations
	Klawock Hatchery Saltwater Coho Net Pens
	Klawock Hatchery Wood Heat System
	Klawock Hatchery Drum Filter System
NSRAA	Klawock Water Pipeline Replacement
	Increase Deer Lake Coho Production
	Increase Green Lake Coho Production
SSRAA	Medvejie Net Pen Lighting
	Port Armstrong Chinook Remote Release & Chinook/Coho Expansion
	Crystal Lake Hatchery Heat Exchanger
	Whitman Lake Water Supply Upgrade
DIPAC	City Creek King Salmon Project
	Deer Mountain Hatchery Expansion
ADFG	Chinook Rearing Capacity Expansion
	Juneau Area Chinook Expansion at Lena Cove
ADFG	Improve estimates of Alaska hatchery fish.

## Infrastructure

City of Pelican	City of Pelican Ice Machine
City of Yakutat	Yakutat Marine Fuel Line Extension
City of Craig	Craig Public Ice House Upgrades & Expansion
Tonka Seafoods	Tonka Troll Buying Expansion
Multiple Grantees	Freezer Technology Research & Improvement
E.C. Phillips & Son, Inc.	Equipment Purchases & Floating Dock Repair
Seafood Producers Cooperative	Troll Salmon Value Improvements & Portable Slurry Ice Machine
Wooden Wheel Cove Trading Post	Fuel Storage Tank Improvements
Petersburg Harbor	Petersburg Troller Work Float
Coastal Cold Storage	Freshwater Ice Maker and Refrigeration Unit
Petersburg Economic Development Council	Improve Ice Access at Petersburg Cold Storage
Sea Level Seafoods	Ice System Upgrade

## Research

ADFG	Keta River Chinook Broodstock Development
Takshanuk WS Council	Chilkat River Large Woody Debris Placement
ADFG	Vessel for Taku River Chinook Mark-Recapture

## 2015 Board of Fisheries Actions

BOF	Amendment	Proposal	ATA	Issue
FAILED		113	O	Prohibit all fishing around Cache Island for bottomfish, crab, and shrimp.
PASSED	RC 77	139	S	Define mechanical jig separate from dinglebar troll and add hook limit.
FAILED		140	O	Increase commercial lingcod size limit to 30".
PASSED		141	S	2 lingcod in Sitka Sound per troll trip; remove dorsal for personal use.
FAILED		157	O	Reduce the sport king salmon size limit to 26".
FAILED		159/160	S	Nonresident annual limit of coho, sockeye, pink and chum salmon is 3 times the daily bag limit; no limit for residents.
PASSED		167	S	Open Juneau road system to sportfishing for hatchery kings
FAILED		174	O	Establish Taku River Mgmt Plan; failed but BOF set up a workgroup.
WITHDRAWN	RC 41	175	O	Evaluate potential changes to enhanced salmon allocation plan.
FAILED		176	O	Develop detailed harvest plans for NSRAA and DIPAC.
PASSED		184	S	Open Kendrick Bay Terminal Harvest Area to trolling.
FAILED		187	O	Add drift gillnet fishery to the Southeast Cove Terminal Harvest Area
FAILED		188	O	Modify seine and troll fishing schedules in Southeast Cove THA.
PASSED	RC 117	193	O	Close seining in portions of D12 & D14 to protect subsistence.
FAILED		194 –195	O	Close portion of Lisianski Inlet to seining.
FAILED		196	O	Revise stat lines in Lisianski Inlet to quantify seine harvest of local coho stocks.
NO ACTION		201	O	Close certain waters of Chichagof and Admiralty Island to seining.
PASSED w/amd	ADFG may now require 6" mesh	208	S	Restrict mesh size to 6 inches in D8 during years of no directed king salmon fishery. <i>ATA supported only with amendments. ADFG was granted emergency order authority to use 6" mesh.</i>
FAILED		220	O	Modify Yakutat winter troll boundary line.
FAILED		221	NA	Expand winter troll fishery in Yakutat to the territorial sea line.
PASSED		222	S	Clarify that spring troll fisheries are based on Alaska hatchery kings.
FAILED		223	O	Change troll fishery king salmon summer harvest split from 70:30 to 60:40.
PASSED	RC 139	224(ATA)	S	Allow ADFG to implement up to 10 day trip limit after Sept.1, if there is insufficient Chinook quota remaining for a competitive troll opening.
PASSED	RC 143	225	S	Extend the sunset date in the D12 & 14 hatchery chum fishery.
FAILED		228	O	Close the commercial troll fishery from August 1-10 each year.
PASSED	RC 66	229	S	Open an area between No. Chatham Strait and Homeshore to trolling, to allow transit for trollers participating in D12 & 14 hatchery chum fishery.
WITHDRAWN	RC 70	230	O	Restrict trolling in 15-C on July 1 concurrent with the drift gillnet fishery.
FAILED		231	O	Reduce area opening to trolling in Naha Bay.
PASSED		232	NA	Clarify power troll gear specifications do not include fishing rods.
FAILED		233	S	Allow downriggers as legal commercial hand troll gear year-round.

Find RC's and other Board of Fish Info @ [Board of Fisheries](#)



## Thanks and Farewell...

This year saw a changing of the guard for both ADFG and Alaska's treaty team. ADFG Deputy Commissioner and Treaty Commissioner David Bedford retired last summer. Not far behind him was Gordy Williams, who chaired the treaty's Northern Panel and acted as Bedford's 'shadow' at treaty meetings. Prior to state service Dave and Gordy spent many years as trollers. Bedford was on the ATA board in the late 1980's and served as a troll representative at treaty. Williams worked in the ATA office on two separate occasions, and was of particular help to us on the Glacier Bay and Tongass habitat issues. Both of these men have served the industry in a variety of ways over the years and are deserving of our thanks and praise.

New to the treaty scene is Charlie Swanton, who is serving in both of Bedford's previous roles. He was most recently Director of Sportfish Division, where we saw many improvements made on data issues and interactions with the commercial fishing sector. We are confident that Swanton will do a great job as commissioner and are already discussing with him ways that ATA can assist the state as we head towards the 2018 renegotiation of the treaty annexes. It will be important for the state and industry to team up if we are to get the best deal for Southeast fishermen and the seafood industry. It's important that our abundance based Chinook agreement is built on the best science possible and that Alaska has fair access to the fish we share with the Lower 48 and Canada. Swanton is committed to these goals.

We should also give a shout out to Stefanie Moreland, who served a short time as treaty commissioner. The election brought a number of staffing changes, and this was one. Stefanie did a

great job in her short stint and it was disappointing to see her go. We wish her well on her new endeavor with Trident.

### *Many Thanks...*

**Seafood Producers Cooperative  
Sitka Sound Seafoods  
Triad Fisheries**



Your exceptional support helps ATA stay on the job.

## Board of Directors: Nominations Open thru May 31st

The following seats are open for nomination:

**At Large, Sitka (2), Juneau, Wrangell,  
Northern Rural, Southern Rural, Handtroll**

- Both the candidate and the person who nominates them must be ATA members in good standing.
- Powerrollers nominate and elect powerrollers; handtrollers nominate and elect handtrollers.
- Board term is 2 years - November 2015 to Nov. 2016.
- ATA pays board meeting expenses, which includes two board meetings a year and teleconferencing.

Contact the office right away if you have not received a form and are interested in running or nominating someone for the board.

## 25th Annual Raffle

**\$2500 Grand Prize**



**Tickets on Sale Now**

## ATA Weighs in on Sitka Charter/Troll Conflict

It's beginning to be a way too common event in some areas. You pull anchor early and pick up a few fish on your favorite drag; you decide to make another pass. Just when you least expect it a charter boat skipper cuts you off and throws anchor a few short yards in front of your boat! Or, maybe a guide or two have set anchor in the middle of the drag, but you can't tell they're on the hook until you're right on top of them, because they haven't displayed the proper signage in their rigging... or maybe it's just that the purple balloon they thought would suffice has run out of steam. Whatever the reason, your morning is off to a bad start and you're just lucky if no one gets hurt. This was basically the situation that was phoned in to the ATA office from a Sitka troller last summer, except his vessel had been damaged. What ensued was a frustrating quest for him to get adequate information and determine whether or not there was anything he could do. ATA doesn't usually get in the middle of these situations, because it's impossible to take a side if you weren't there to see what happened. In this case, tempers were flaring at Cape Edgecomb on a near daily basis. Witnesses to disputes were calling in to confirm that a few charterboats were playing hardball with the troll fleet as they jockeyed for position. The August king opener was just days away. Everyone knew there were fish at Edgecomb and many trollers were headed that way. This was not going to end well if something wasn't done. So we gathered affidavits from willing trollers who had been involved in, or witnessed problems. Inquiries were made to determine whether or not USCG was looking into the situation with the damaged vessel - they were. Sitka and Juneau USCG and the ADFG commissioner were contacted, to lodge concerns and ask that enforcement head to Edgecomb to try and settle things down. That was done, and the USCG posted ads in the media reminding charter operators to be prudent mariners. They also contacted local lodge and charter owners about the matter.

At the request of ATA and several Sitka trollers, USCG has agreed to host spring meetings for charter skippers and trollers, to outline the existing laws and provide a Rules of the Road refresher. The date is set for May 7 - we hope you'll plan to attend. And, if you have problems with another vessel on the grounds, keep a cool head, make sure you're following the Rules of the Road, and contact the USCG if you and the other skipper just can't work it out.



## TOM POPE SA MARINE SURVEYOR

*Serving the Fishing Fleet  
Since 1967*

**360-452-3455**

Email: popesurvey@aol.com

Schedule Spring surveys now for  
no travel expenses. (SE & BB)

Society of Accredited Marine Surveyors



### ATA T-Shirt Outlets

Be sure to stop by these  
suppliers and check out  
new color selections. There

is also a limited selection of women's tees  
in the ATA office.

**Ottesen's True Value Hardware**, Wrangell

**Sentry Hardware**, Wrangell

**The Clothes Company**, Craig

**F/V Mai Tai (Casey Mapes)**, Yakutat

ATA tees come in two varieties. *Salmon Trolling is Healthy for Alaska's Economy* is a beautiful block print of a wooden troller by Sitka artist, Rebecca Poulson. The other shirt sports an ATA pocket logo. In the spirit of buying local, both shirts are printed in Sitka on heavy duty cotton by the fabulous Fairweather Prints.

Not planning to be in those ports anytime soon? You can still place orders through the office or at port meetings and events.

2015 Winter Fishery	Total	Permits	Landings	Avg Wt.	Avg. Fish Ticket Price
2015	50,536	410	3,533	11.5	\$8.68
2014	56,534	464	3,923	11.8	\$6.89
5 yr Avg (2010-14)	44,883	467	3,736	12.2	\$7.32
10 yr Avg (2005-14)	41,739	460	3,721	12.8	\$6.72

## 2015 Raffle Results

PRIZE	DONOR	WINNER	CITY
\$2,500	ATA	Steve Enge	Petersburg
\$1,000	ATA	Mike Mayo	Sitka
\$500	ATA	Mike Rentel	Juneau
\$75	Petersburg Rexall	Ben Lawrie	Sitka
\$75	Petersburg Rexall	Raymond Douville	Craig
\$100 Fuel	Clover Pass Resort	Mike Bobo	Craig
\$100 Gift Card	Madison True Value	Bill Privett	Wrangell
\$100 Gift Certificate	Tatsuda's IGA	Dennis Northrup	Ketchikan
\$100 Gift Certificate	NAPA Auto Parts	Marty Remund	Haines
\$100 Seattle Marine Gift Card	Hoonah Cold Storage	Bill Privett	Wrangell
\$100 Seattle Marine Gift Card	Hoonah Cold Storage	Brett Stillwaugh	Wrangell
\$25 Gift Certificate	Safeway	Joe Emerson	Juneau
\$30 Gift Certificate	Larkspur Café	Casey Phillips	Sitka
\$300 Custom Processing	The Cedars Lodge	Dennis Northrup	Ketchikan
\$35 Gift Card	Alaskan Brewing Co.	James Phillips	Pelican
\$50 Gift Certificate	Whites, Inc.	Greg Friedrichs	Pt Townsend
\$50 Gift Certificate	Piston & Rudder	Steve Enge	Petersburg
3 hrs Welding @ Shop	Precision Boatworks	Susan Padilla	Sitka
5# Box King & Coho Mix	Sitka Salmon Shares	Ceri Malein	Sitka
50% off Survey Fee	Tom Pope	Walt Pasternak	Sitka
Albacore Tuna	Seafood Producers Cooperative	Arlene Woodward	Wrangell
Albacore Tuna	Seafood Producers Cooperative	Kathy Finsley	Sitka
Albacore Tuna	Seafood Producers Cooperative	Patrick Baum	Juneau
Albacore Tuna	Seafood Producers Cooperative	Robert Santi	Kihei, HI
Art Print	Rie Munoz Gallery	Bob Thorstenson	Seattle
Boat Survey	Integrity Marine Surveyors	Charlie Swanton	Juneau
Book on Keane Gau by J Sabella	ATA	Carter Hughes	Sitka
Dog & Cat Treats	Alaska Wild Salmon Company	Ben Peters	Pt Angeles
Dog & Cat Treats	Alaska Wild Salmon Company	Gary Mulligan	Sitka
Dog & Cat Treats	Alaska Wild Salmon Company	Mark Hofmann	Olga
Dog & Cat Treats	Alaska Wild Salmon Company	Melvin Fairbanks	Ketchikan
Free haul out and pressure wash up to 50'	Seaview Boat Yard	Bob Thorstenson	Seattle
Grunden Bibs	LFS, Inc.	Mike Mayo	Sitka
Grunden Jacket	LFS, Inc.	Ken Ash	Sitka
Handcarved Caribou Antler Mask	Fairweather Gallery	Angel Drobnics	Juneau



## Dave Castle Receives Friend of the Fleet Award at Raffle Event

As in any Board of Fish year, February and March were crazy busy months for the board and staff, but that didn't stop us from having a little fun with family and friends. Our crew, lots of great industry folks, and even some ADFG and Board of Fish types took a well earned time out for the ATA raffle event. Dave Castle, of M/V Eyak fame, was officially named a *Friend of the Troll Fleet* and showered with praise for all the good work he does for the fleet and Baranof communities. John Petraborg (F/V Roulette) and Barbara Collins took to the stage with a few sets of wonderful tunes, topped only by Mr. Castle and Allison Sayer who gifted the crowd with a few original songs. Master of Ceremonies, Eric Jordan, took charge of the raffle festivities and wowed us with his fishing photos. Westmark Hotel's Chef Kathy created some scrumptious offerings from the quality seafood donated by Seafood Producers Cooperative and Brett Stillwaugh (F/V McKenna S). All in all, another wonderful event. Thanks to everyone who contributed, be it through prize and food donations, sweat equity pulling the event together, or buying and selling tickets - we couldn't do it without you!

PRIZE	DONOR	WINNER	CITY
Hoodie	Lisianski Inlet Café	Joe Emerson	Juneau
Hoodie	Lisianski Inlet Café	Peter Krovina	Sitka
Long-sleeved T-Shirt	Alaskan Brewing Co.	Gary Mulligan	Sitka
Long-sleeved T-Shirt	Alaskan Brewing Co.	Mike Mayo	Sitka
Mustang MV4620 Fishing Vest	Western Auto Marine	Zach Stenson	Juneau
One Nights Lodging & River Trip for Two	Zimovia Bed & Breakfast and Breakaway Adventures	Steve Runnion	Sitka
One Ton Commercial Ice	City of Craig	Matt Peavey	Craig
Personal Locator Beacon	Seattle Marine	Carter Hughes	Sitka
Rx Polarized Sunglasses	Sitka Vision Clinic	Adam Hackett	Sitka
Smoked Canned Salmon	E.C. Phillips & Son	Howard Pendell	Sitka
Smoked Canned Salmon	E.C. Phillips & Son	Kellan Shoemaker	Sitka
Smoked Canned Salmon	E.C. Phillips & Son	Susan Padilla	Sitka
Smoked Canned Salmon	E.C. Phillips & Son	Tam & Frank Kyle	Sitka
Trolling Hooks	Qi Hooks	Joe Barrett	Pt. Hadlock
Trolling Hooks	Qi Hooks	Mark Stopha	Juneau
Trolling Hooks	Qi Hooks	Wayne Brown	Sitka
Trolling Spoons	Silver Horde Fishing Supplies	Adam Hackett	Sitka
Trolling Spoons	Silver Horde Fishing Supplies	Greg Jones	Sitka
Trolling Spoons	Silver Horde Fishing Supplies	Howard Pendell	Sitka
Trolling Spoons	Silver Horde Fishing Supplies	Ken McGee	Juneau
Trolling Spoons	Silver Horde Fishing Supplies	Kenn Beam	Sitka
Trolling Spoons	Silver Horde Fishing Supplies	Linda Boord	Sitka
Trolling Spoons	Silver Horde Fishing Supplies	Wally Warm	Sitka
Trolling Spoons	Silver Horde Fishing Supplies	Walt Pasternak	Sitka
Trolling Spoons	Silver Horde Fishing Supplies	Wayne Brown	Sitka
USB GPS Receiver	Alaska Computer Center	Mark Stopha	Juneau
Waterproof Duffle Bag	Delta Western - Sitka	Wayne Brown	Sitka

# Calendar

<b>April</b>		
29	ASMI Salmon Committee	Seattle
<b>May</b>		
5	ASMI Board of Directors	Juneau
7	USCG Safety Fair - please RSVP!	8am UAS Campus, Japonski Island, Sitka (ph 966-5454)
<b>June</b>		
1	Comments Due: USCG Documentation Fees	<a href="#">Regulations.gov</a>
1-9	NPFMC	Sitka
9-10	Capitol Hill Ocean Week - <a href="#">Agenda</a>	Washington, D.C.
<b>July</b>		
~20	Comment Due: ESA Delist Humpback Whale	<a href="#">Regulations.gov</a>

## USCG Vessel Safety Fair

The USCG will host a vessel safety fair in Sitka on May 7th geared towards commercial fishing, charter, and recreational vessels. The event will include: Safety Alerts, what to expect when conducting hoisting ops with a Coast Guard helicopter or when being boarded by the Coast Guard, the new VHF Digital Selective Calling system and its capabilities, rules for reporting maritime casualties, marijuana usage on the water and upcoming changes to the commercial fishing vessel safety program. Hands on sessions will include using distress flares, controlling flooding in a damage control trainer, using fire extinguishers, and deploying life rafts. RSVPs are requested, call USCG at 966-5454.

### We're grateful for the support of ATA's Business Members and encourages your patronage of these fine establishments...

Anderes Oil, Ketchikan	Murray Pacific, Sitka	Sitka Boat Watch, Sitka
Bruce Weyhrauch, Juneau	Ocean Beauty XIP	Sitka Salmon Shares, Illinois
City of Craig	Ottesen's True Value	Sitka Sound Seafoods
City of Port Alexander	Hardware	Southeast Pilots, Ketchikan
City of Pelican	Petersburg Fisheries,	Taku Oil, Juneau
City of Wrangell	Petersburg	Taku Smokeries, Juneau
Hill Bar & Liquor, Craig	Petro Marine, Seward	The Boat Company, WA, DC
E.C. Phillips & Son, Ketchikan	Precision Boatworks, Sitka	The Office Bar, Hoonah
First Bank, Ketchikan	Qi Hooks, Sitka	Timber & Marine Supply, KTN
Hammer& Wikan, Petersburg	Savage, Inc., Seattle	Tongass Trading, Ketchikan
Hoonah Cold Storage	Seafood Producers Co-op	Trading Union, Petersburg
Hoonah Cold Storage	Sea Mart, Sitka	Triad Fisheries
House of Liquors, Sitka	Seattle Marine, Seattle	Union Machine Shop, KTN
LFS, Inc, Bellingham	Service Auto Parts, Ketchikan	US Seven Oceans, Mukilteo
Madison Lumber, Ketchikan	Shoreline, Pelican	Yakutat Seafoods, Yakutat
Murray Pacific, Ketchikan		

# Welcome New Members

(Through 4/18/15)

New	Boat	Home Port	Type
Jess Rugo	Barbi J	Wrangell	CW
Tod Richards	Admiral	Elfin Cove	PT
Joe Smith	Caribou	PT Townsend	PT
Howard Starband	Miss Amy	Hoonah	PT
Ben Attwood	Aquila	Ward Cove	PT
Sean Hovik	Cheryl	Ketchikan	PT
Walter Stuart	Kelly Rose	Wrangell	PT
Ron Conatser	Ida Lea	Rice, WA	PT
Casey DiGennaro	Dorothy Ann	Sitka	PT
Joe Barrett	Westerner	Pt. Hadlock	PT
Dugan Daniels	Pacific Bounty	Ketchikan	PT/S
Daniel Rasmussen	Clarena	Chimacum	PT/S
Delta Western		Sitka	B
Savage, Inc.		Seattle	B
SE Pilots		Ketchikan	B

## Upgrades

Debra Rose Gifford	Luck Point	Pt. Alexander	CW/G
Brett Zaenglein	Ginger	Sitka	PT
Martin Gowdy	Charity	Seattle	PT/S
Ben Peters	Jaeger	Pt Angeles	PT/S
Jeff Farvour	Suunta	Sitka	PT/S
Bert Bergman	Minke	Sitka	PT/G
Jaycen Andersen	Cinnabar	Sitka	PT/G
Wayne Winther	Adelyn L	Petersburg	PT/P
Ken Wilkinson	Joseph	Sitka	PT/P
Qi Hooks		Sitka	B/S

## Retired

Dwain Reddekopp	Carol Ann	Auke Bay
-----------------	-----------	----------

Did we miss you? Give a call!

## 2015 Priorities

Treaty/ESA  
Board of Fisheries  
Offshore Aquaculture  
EPA / DEC Regulations  
USCG Safety  
Regulation  
Sportfish Issues



## Board of Directors

### Steve Merritt, President

cestlavie@aptalaska.net

*C'est La Vie, Southern Rural*

### Jim Moore, Vice President

aljac47@yahoo.com

*Aljac, Northern Rural*

### Joel Kawahara, Secretary

joelkaw@earthlink.net

*Karolee, Lower 48*

### Tad Fujioka, Treasurer

tadsitka@gmail.com

*Merlin, Sitka*

### Matt Lawrie

matt.thusela@gmail.com

*Born Again, Sitka*

### Ken McGee

kenmcgee@gci.net

*Northstar, Juneau*

### Mark Roberts

capecross@gci.net

*Cape Cross, Petersburg*

### Mike Rugo

rugofish@aptalaska.net

*Formerly Barbi J, Wrangell*

### Ben Peters

toyotatacoma28@hotmail.com

*Jaeger, Lower 48*

### Thatcher Brouwer

thatcher.brouwer@gmail.com

*Deep Sea, At Large*

### Matt Donohoe

Matthew\_Donohoe@yahoo.com

*Helen A, At Large*

### Ben Atwood

blondebenjo1983@hotmail.com

*Aquilla, Ketchikan*

### Casey Mapes

yak2you2@yahoo.com

*Mai Tai, Handtroll*

### Staff

**Dale Kelley, Executive Director**

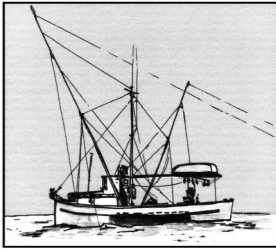
ata@gci.net

### Treaty Representatives

Howard Pendell, *Chaos*

Dennis Longstreth, *Shearwater*

Dale Kelley, *ATA*



## Alaska Trollers Association

130 Seward #205  
Juneau, AK 99801  
(907)586-9400 ph / 4473 fx  
ata@gci.net  
[aktrollers.org](http://aktrollers.org)

**Non-Profit  
Organization  
US Postage  
PAID  
Permit #155**

## Join Today!

☐ Renewal ☐ New Member

Category	Power	Hand	Crew	Processor	Other Business	For Your Convenience...
Basic	350	150	75	500	250	You may include the following dues & contributions along with your ATA dues:  <input type="checkbox"/> ATA Treaty Defense (\$_____ donation ) <input type="checkbox"/> ATA Legal Fund (\$_____ donation ) <input type="checkbox"/> United Fishermen of Alaska (\$175 dues) <input type="checkbox"/> Halibut Coalition (\$_____ donation )
Silver	400	200	110	1000	500	
Gold	450	250	160	2500	1000	
Platinum	550	350	300	5000	2500	
LIFE	5000	2000	750			
1st YR Initiation Rate	175	75				
Retired Troller	50	50	50			

Name: \_\_\_\_\_ F/V: \_\_\_\_\_

Address: \_\_\_\_\_ City/ZIP: \_\_\_\_\_

Phone/Cell: \_\_\_\_\_ E-Mail: \_\_\_\_\_

Crew Size: \_\_\_\_\_ Ice Boat: \_\_\_\_\_ Freezer Boat: \_\_\_\_\_ Direct Seafood Marketer: \_\_\_\_\_ Processor: \_\_\_\_\_ SPC: \_\_\_\_\_ UFA: \_\_\_\_\_

Other Fisheries: \_\_\_\_\_ Call-In Program? Yes \_\_\_\_\_ No \_\_\_\_\_

Are you willing to volunteer some time and/or expertise to ATA? Yes \_\_\_\_\_ No \_\_\_\_\_

DONATION: \$ \_\_\_\_\_ Please use my extra donation for: Legal \_\_\_\_\_ Treaty \_\_\_\_\_ General Purposes \_\_\_\_\_ Publicity \_\_\_\_\_

T-SHIRTS: Men's: Forest Green, Charcoal, Brown, Black w/logo (M, L, XL, XXL) Women's: Black w/logo (L)

Qty. Size(s) Color(s) Hat: \$25 - TEMPORARILY OUT OF STOCK

Long-sleeve \$25 \_\_\_\_\_ Short-sleeve \$25 \_\_\_\_\_ Raffle Ticket: \$20 each # \_\_\_\_\_

May we substitute if color/style choice unavailable? Yes \_\_\_\_\_ No \_\_\_\_\_

Method of Payment: Check \_\_\_\_\_ Mastercard \_\_\_\_\_ Visa \_\_\_\_\_ Need a Receipt? \_\_\_\_\_

Account # \_\_\_\_\_ Exp. Date: \_\_\_\_\_

Amount: \$ \_\_\_\_\_ Signature: \_\_\_\_\_

A receipt for tax purposes is sent to all members in late January. Check only if you want an extra receipt & add email: Yes \_\_\_\_\_ No \_\_\_\_\_

